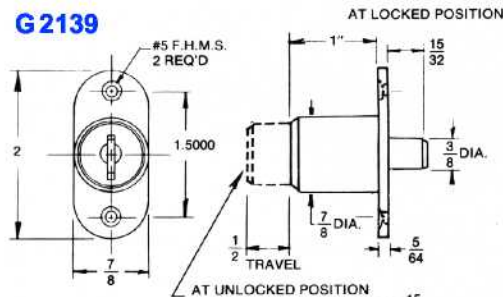


PLUNGER LOCKS

G2139



KEYING:

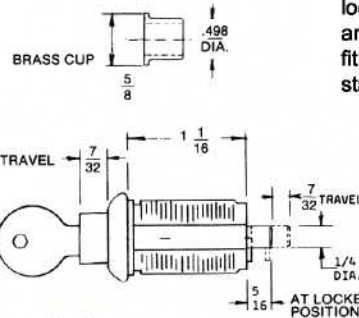
- keyed alike, keyed different, master keyed
- 2 brass keys, ring

OPTIONS:

- key number on face of coil

ACCESSORIES:

- see page 33



GDC 3088

G2139

Operation - This sliding door lock has a dead bolt which is locked by pushing the plunger in and is released by turning with a key. Available with sliding dust cover as GDC2139. Locking cylinder cannot be removed from housing without key. Supplied with brass cup as shown. See page 34 for finishes.

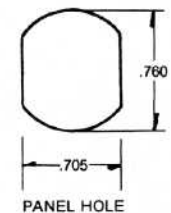
GDC 3088 & 2354

Operation - This plunger lock is shown in the locked position. Turning a key 90 degrees allows plunger to be depressed for striking action. Spring loaded plunger returns to starting position when pressure is removed from plunger. Key is removable in locked or unlocked position. Additional weather and dust shield around plug head provides protection and a low friction sliding fit for plug movement. U.S. Patent No. 3910082. Finish is stainless steel scalps.

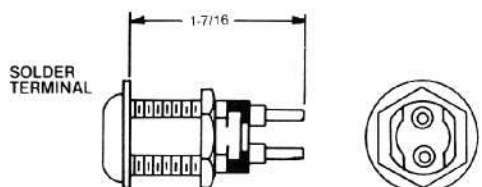
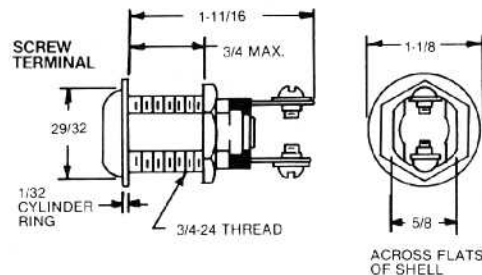
GDC3088



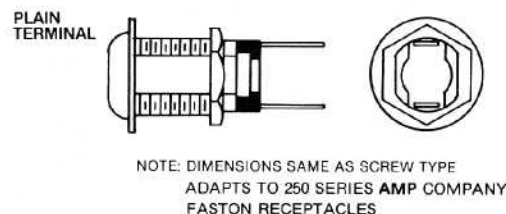
GDC2354



SWITCH LOCKS



NOTE: DIMENSIONS SAME AS SCREW TYPE EXCEPT AS SHOWN.



NOTE: DIMENSIONS SAME AS SCREW TYPE ADAPTS TO 250 SERIES AMP COMPANY FASTON RECEPTACLES

Available Styles - Solder terminals or screw terminals for standard harness attachment, plain flat terminals for push-on type connectors as indicated by chart.

Keying - 5 disc tumblers, 2 ringed brass keys, 250 key changes. Can be keyed alike, keyed different or master keyed.

Outdoor Applications - Protective dust shields are available for all switches by adding the prefix "DC" to the catalog number.

Standard Electrical Characteristics - Contact arcing: 2.1 amps @ 46 volts (96 V.A.).

Alternate Electrical Characteristics - Contact arcing: 2.5 amps @ 120 volts (480 V.A.).

Momentary Contact Switches - Series 42 and 52 switch locks have a built-in spring return to bring the key back to the withdrawal position when released.

With Key Out

Cat. No.	Key Removable In.	Contact Is	Terminals	Contact
EL 31-1	Off Position	Open	Screw	Maintaining
EL 31-2	Off & On Position	Open-Closed	Screw	Maintaining
EL 31-3	On Position	Closed	Screw	Maintaining
EL 31-4	Off Position	Open	Solder	Maintaining
EL 31-5	Off & On Position	Open-Closed	Solder	Maintaining
EL 31-6	On Position	Closed	Solder	Maintaining
EL 51-1	Off Position	Open	Plain	Maintaining
EL 51-2	Off & On Position	Open-Closed	Plain	Maintaining
EL 51-3	On Position	Closed	Plain	Maintaining
EL 42-1	Off Position	Open	Screw	Momentary
EL 42-3	On Position	Closed	Screw	Momen. off
EL 42-4	Off Position	Open	Solder	Momentary
EL 42-6	On Position	Closed	Solder	Momen. off
EL 52-1	Off Position	Open	Plain	Momentary
EL 52-6	On Position	Closed	Plain	Momen. off



Manufacturer can substitute alternate equivalent.

1-800-434-8960

25